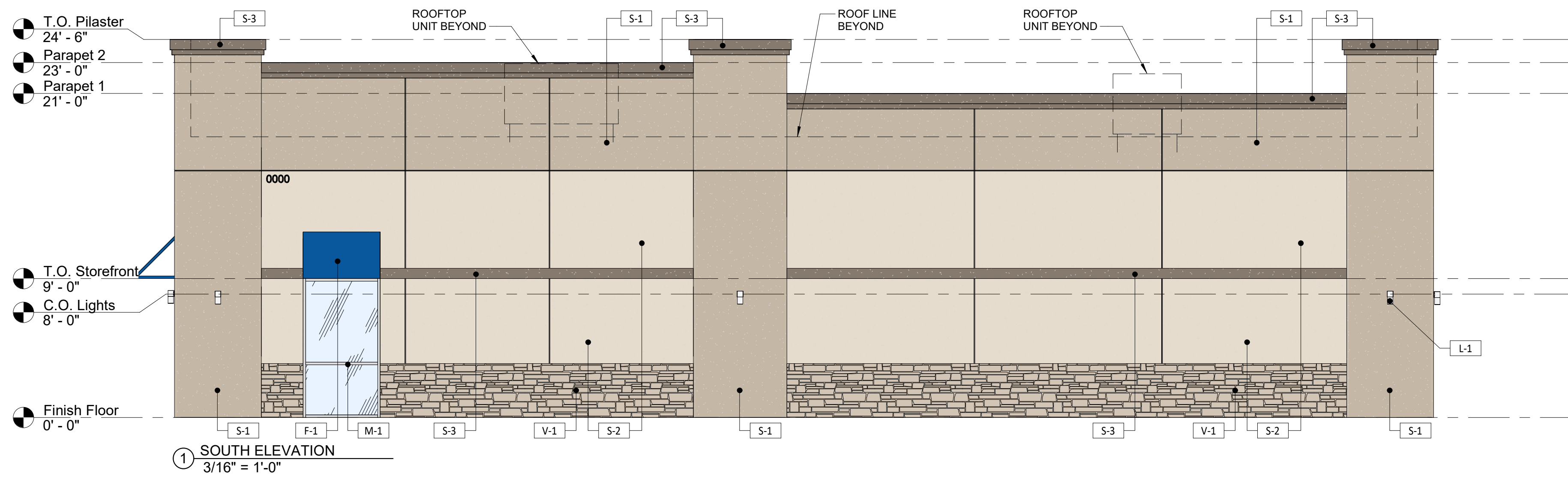
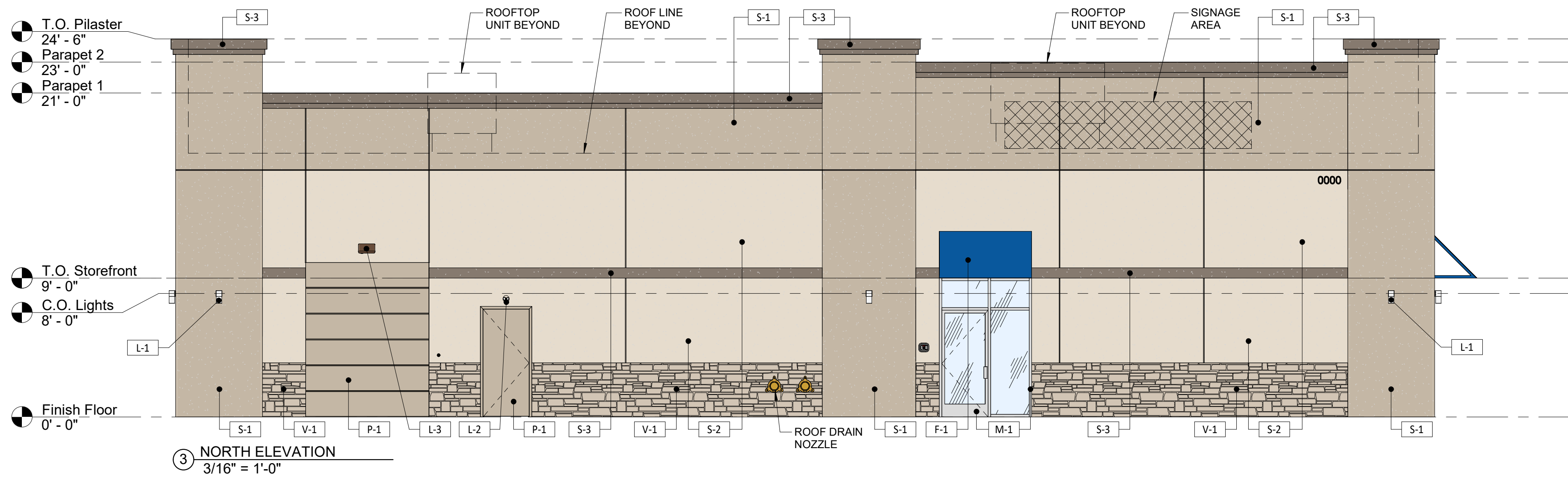
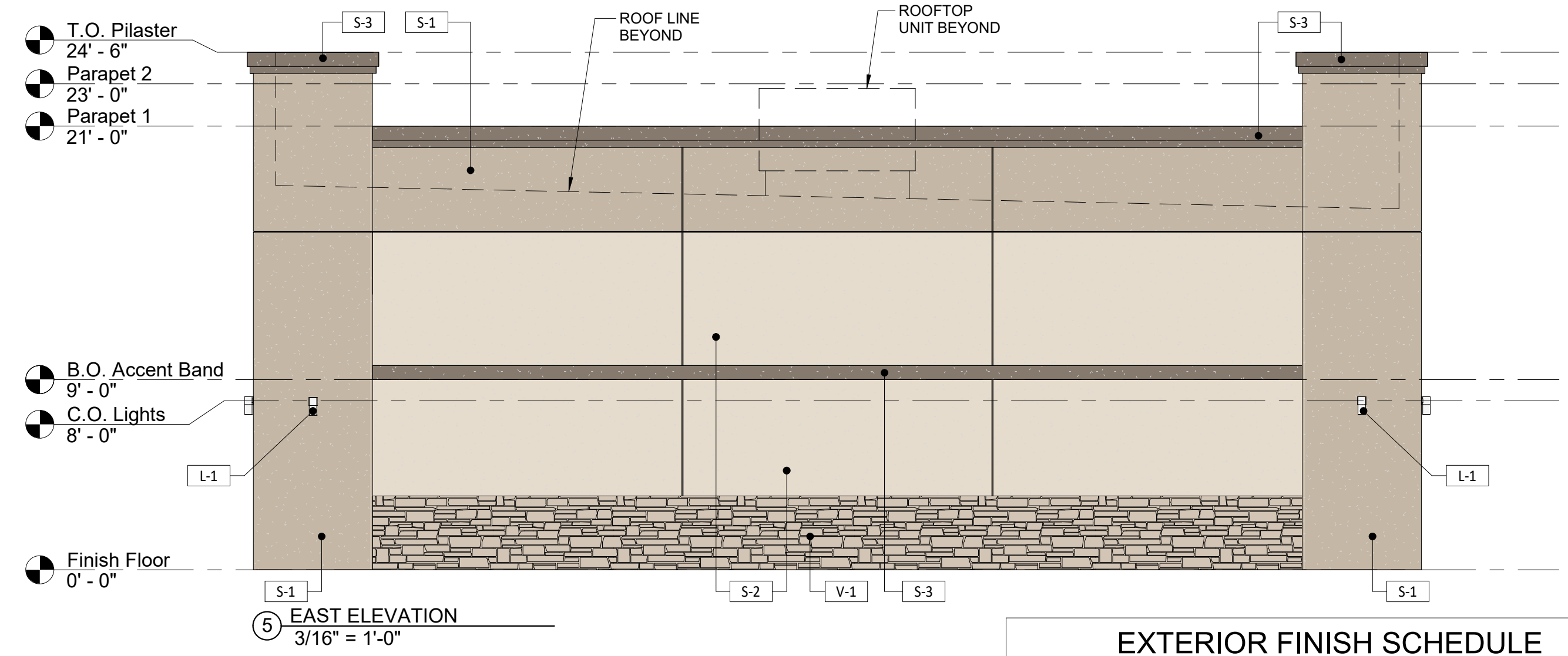
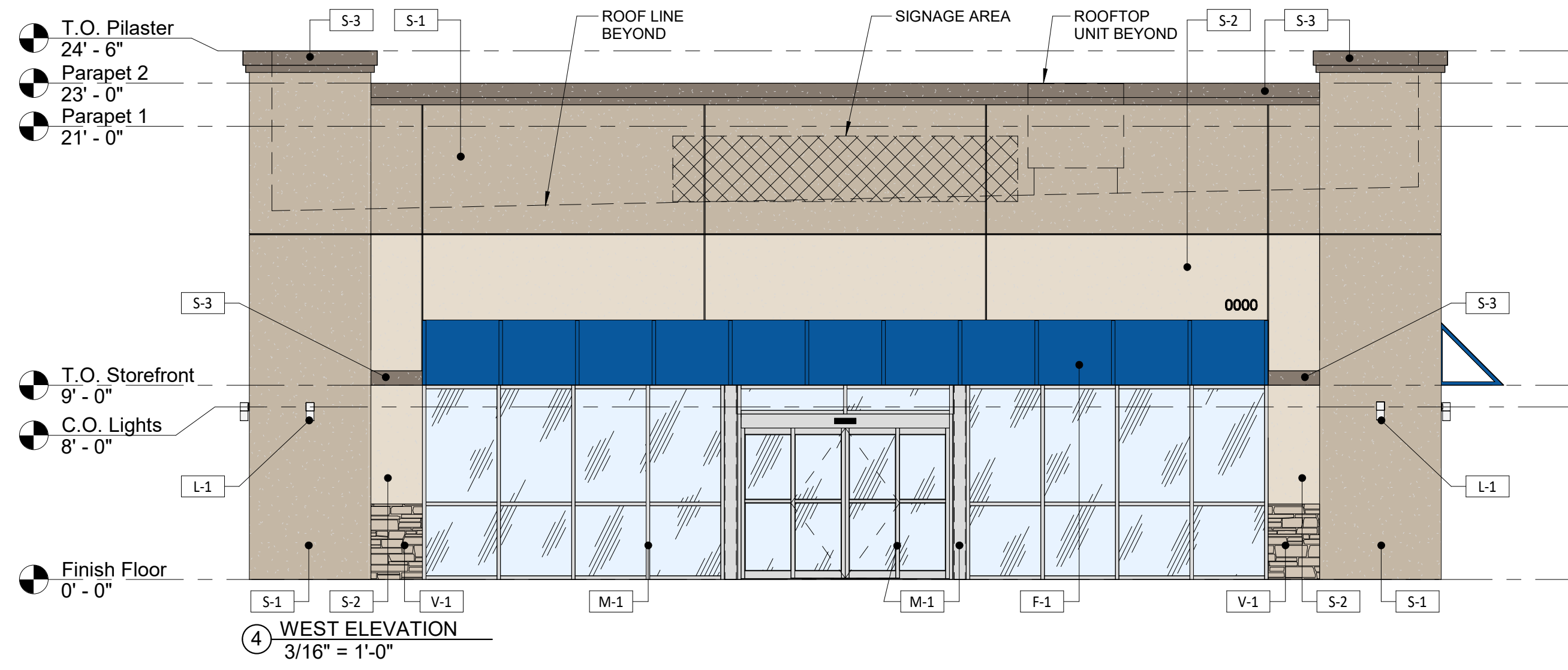


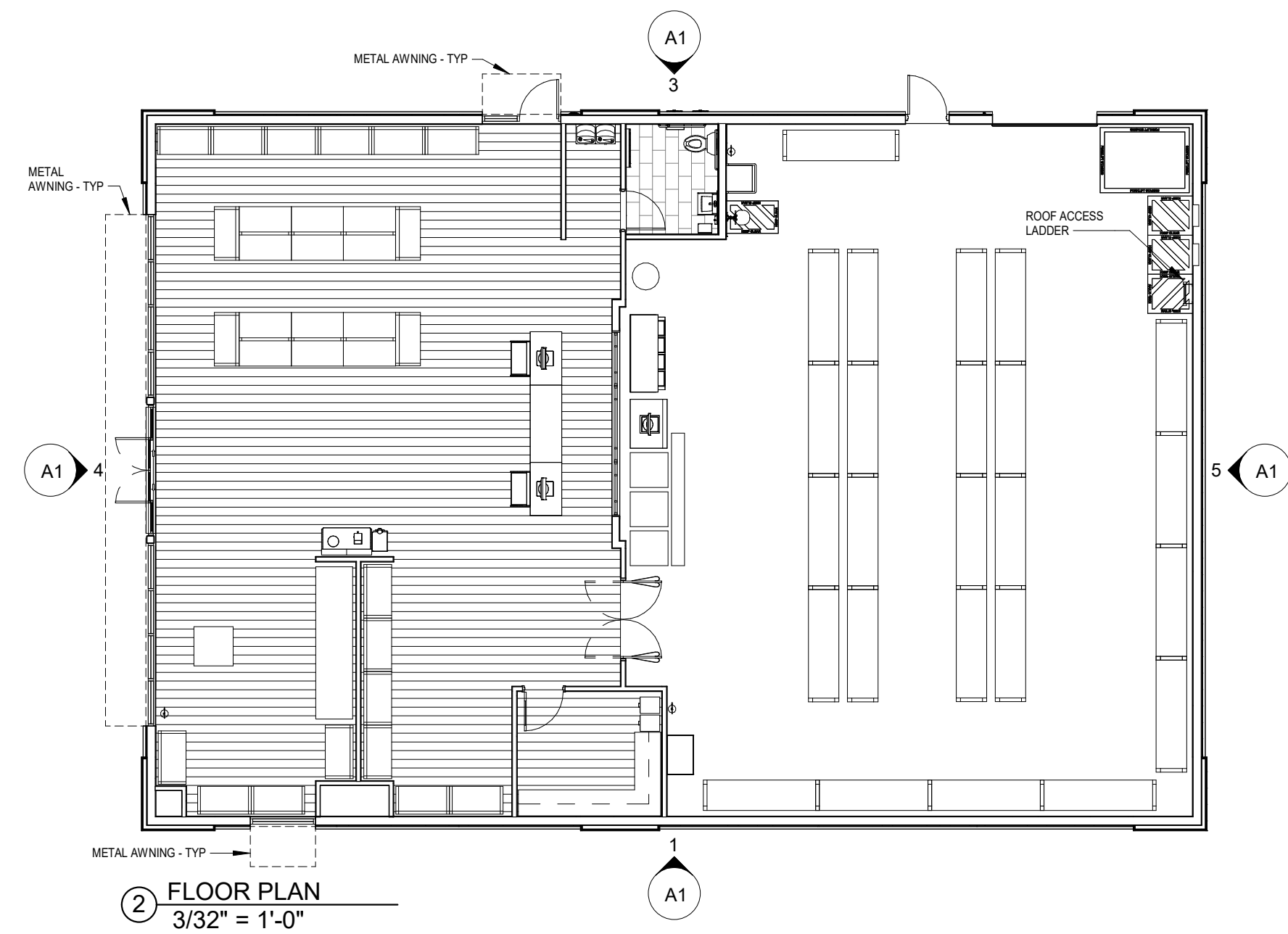
SHERWIN-WILLIAMS

12840 FM1560
HELOTES, TX 78023



MARK	DESCRIPTION	MANUFACTURER & SPEC
L-1	EXTERIOR LIGHTING	LANTERRA 9004 LED WALL MOUNTED CYLINDER DISTRIBUTION: UP/DOWN COLOR: BRONZE
L-2	EXTERIOR LIGHTING	LSI-EPM MR-16 THERMOPLASTIC EMERGENCY UNIT LED WALL MOUNTED DISTRIBUTION: DOWN COLOR: STANDARD
L-3	EXTERIOR LIGHTING	LNC3 LITEPAK LED WALL MOUNTED DISTRIBUTION: DOWN COLOR: BRONZE
L-4	SITE LIGHTING	LITHONIA LIGHTING KAD LED AREA LUMINAIRE 60C 1000 40K R3 MVOLT SPD 06 FINISH: DDBXD (DARK BRONZE)

MARK	DESCRIPTION	MANUFACTURER & SPEC	SAMPLE
S-1 (P-1)	STUCCO - FIELD (PAINT)	TEXTURE: PEBBLE COAT COLOR: SHERWIN-WILLIAMS SW 7506 LOGGIA	
S-2 (P-2)	STUCCO - BAY (PAINT)	TEXTURE: PEBBLE COAT COLOR: SHERWIN-WILLIAMS SW 6105 DIVINE WHITE	
S-3 (P-3)	STUCCO - FIELD (PAINT)	TEXTURE: PEBBLE COAT COLOR: SHERWIN-WILLIAMS SW 7025 BACKDROP	
V-1	STONE VENEER	CORONADO STONE FREEDOM BUILDING STONE TEXAS CREAM	
M-1	ANODIZED ALUMINUM	COLOR: CLEAR ANODIZED ALUMINUM	
F-1	FABRIC OVER METAL FRAME AWNING	COLOR: SHERWIN WILLIAMS BLUE (AWNINGS)	
T-1	TPO MEMBRANE	WHITE (SRI 29 MIN.) 45 MIL TPO MEMBRANE	



LINGLE DESIGN GROUP, INC.
158 WEST MAIN STREET
LENA, IL 61048
815.369.9155
1764 BLAKE ST
DENVER, CO 80202
303.974.5875
WWW.LINGLEDESIGN.COM

ALL DRAWINGS AND WRITTEN MATERIAL CONTAINED HEREIN ARE THE PROPERTY OF THE LINGLE DESIGN GROUP, INC. THEY MAY NOT BE REVISED, COPIED, REPRODUCED, OR DISCLOSED IN ANY MANNER WITHOUT WRITTEN AUTHORIZATION FROM THE ARCHITECT.



PROJECT #:
TBD
DRAWN BY: BA
CHECKED BY: MP

SCHMATIC ELEVATIONS - 09/27/2024
△ -
△ -
△ -
△ -
△ -
△ -

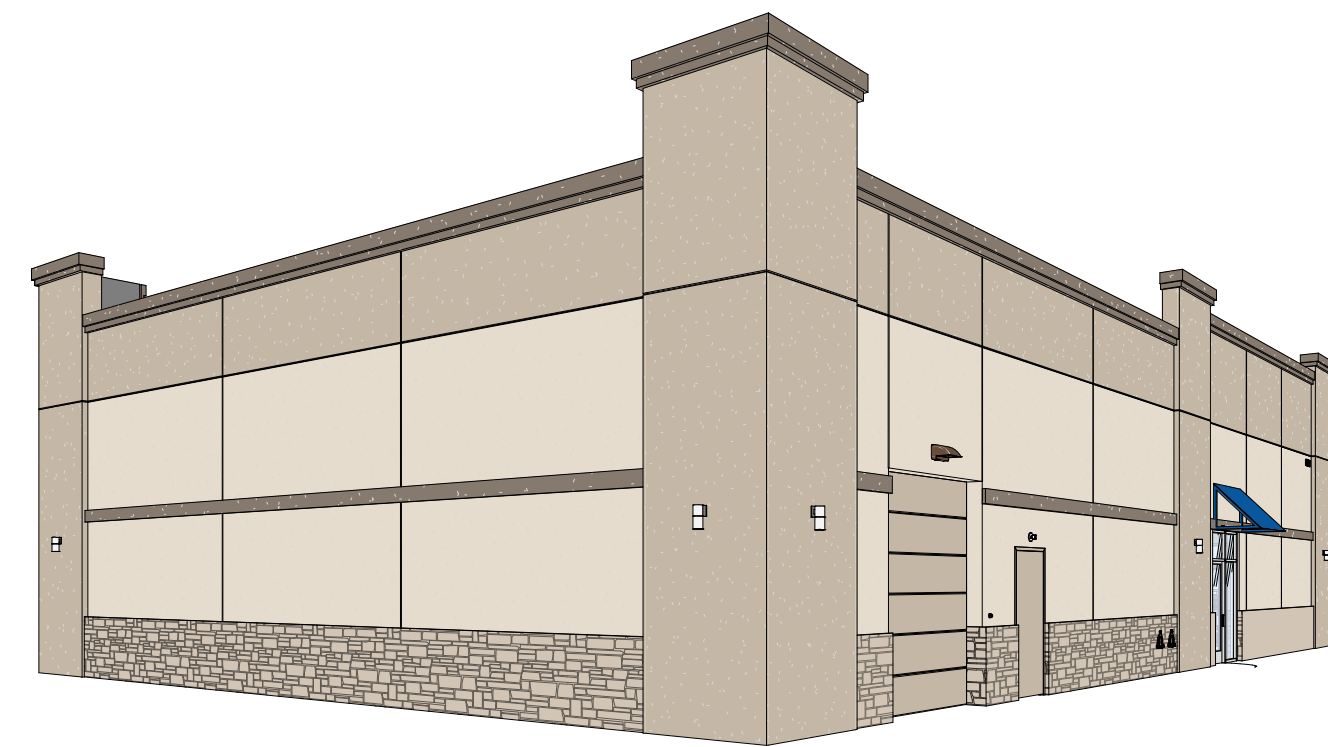
SHERWIN WILLIAMS

STORE #:
XXXX
ADDRESS:
12840 FM1560, HELOTES,
TX 78023

SHEET TITLE:
SCHEMATIC FLOOR
PLAN &
ELEVATIONS

SHEET NUMBER:

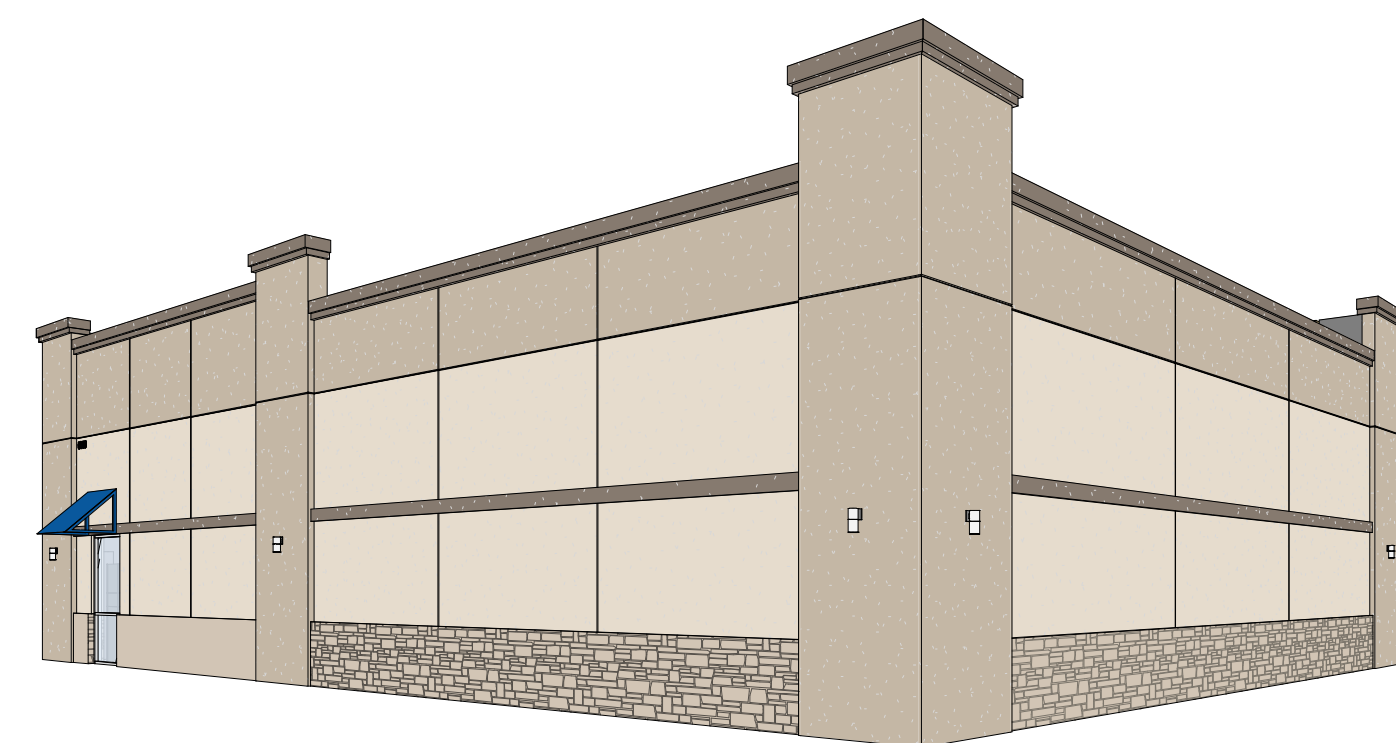
A1



④ SOUTHEAST



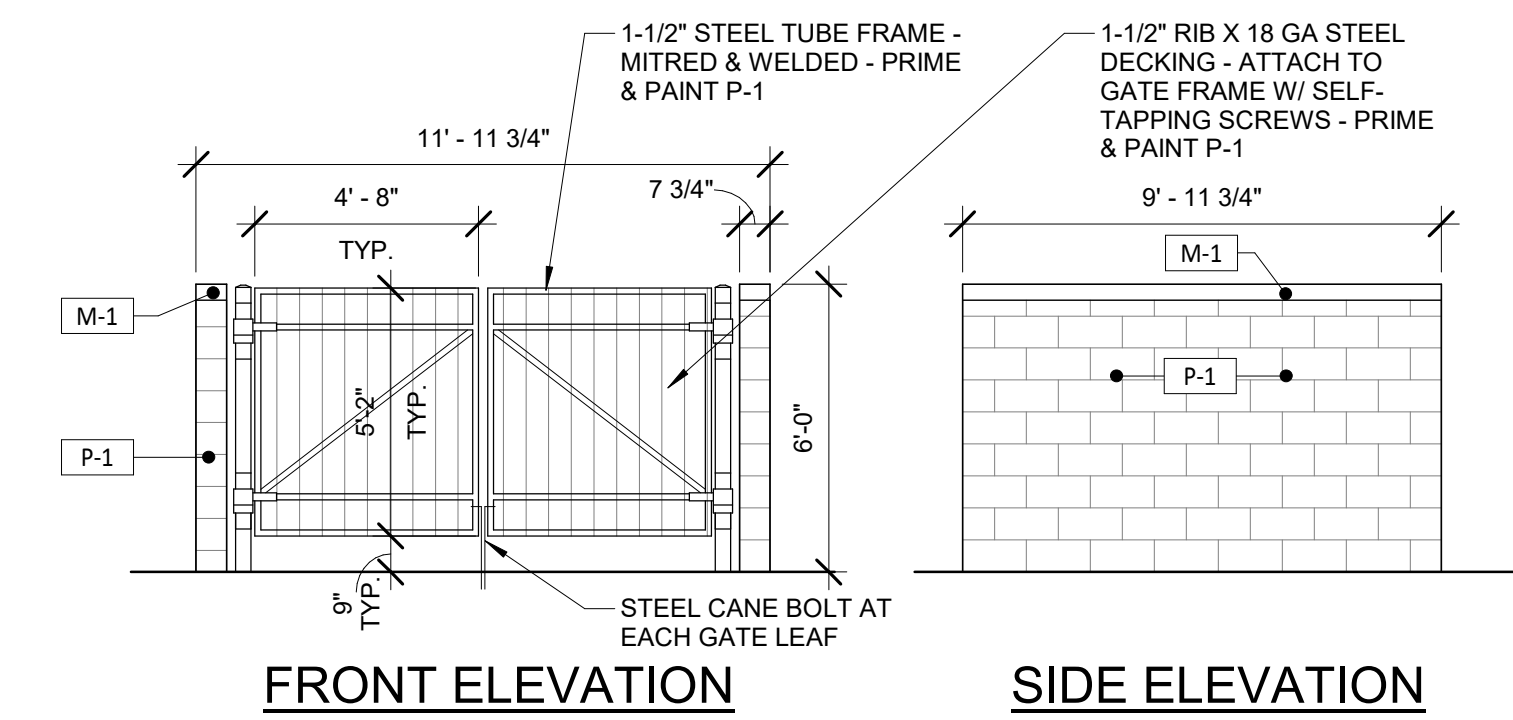
⑤ SOUTHWEST



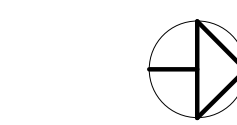
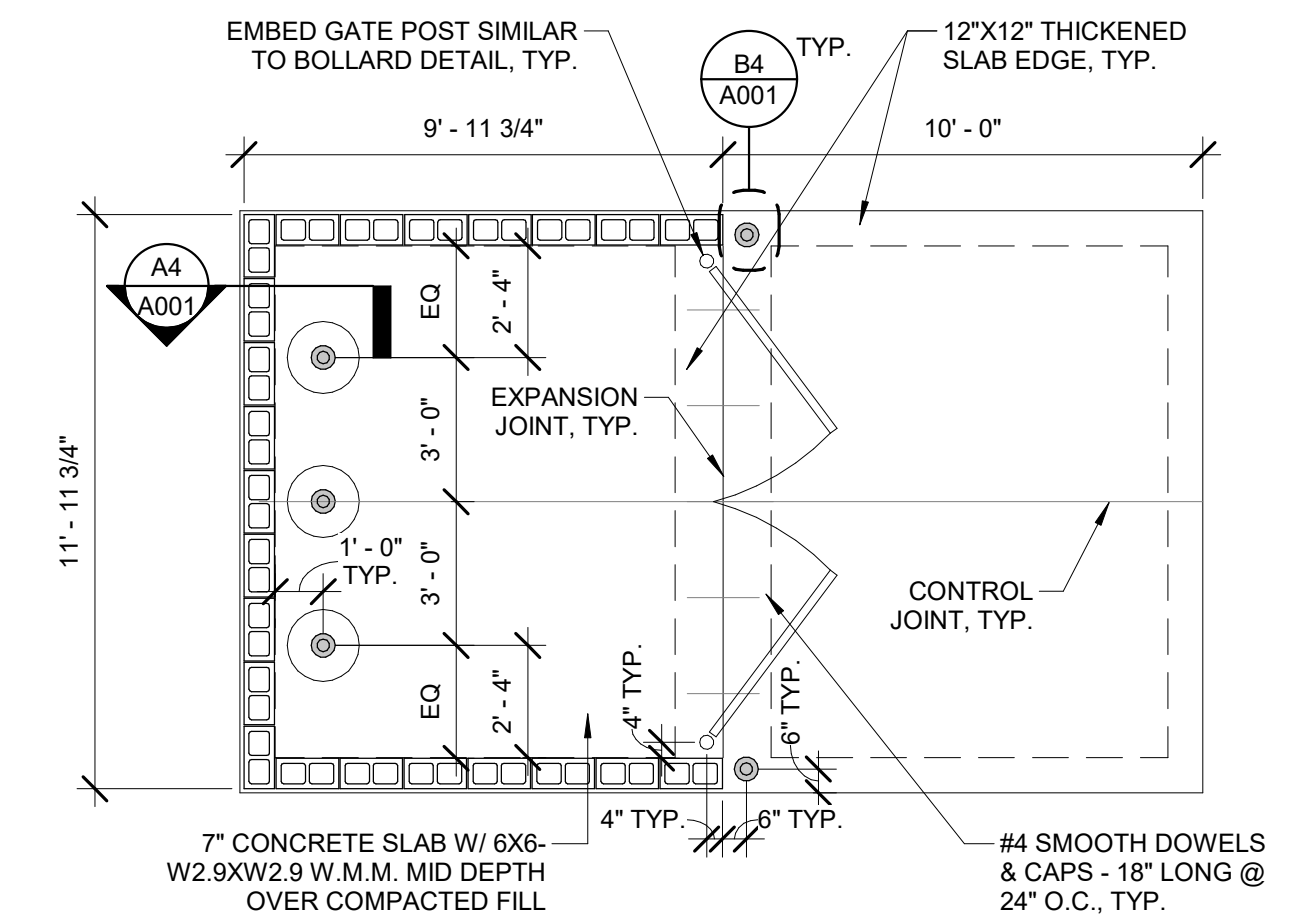
① SOUTHWEST



② NORTHWEST



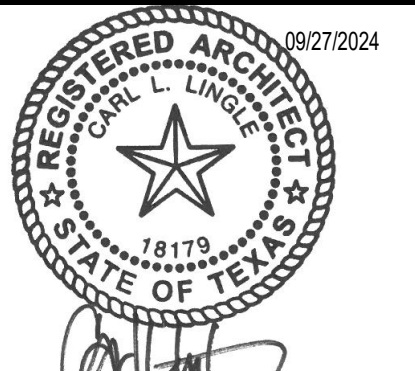
⑥ TRASH ENCLOSURE ELEVATIONS CMU
1/4" = 1'-0"



③ TRASH ENCLOSURE PLAN CMU
1/4" = 1'-0"

LINGLE DESIGN GROUP, INC.
 LINGLE DESIGN GROUP, INC.
 158 WEST MAIN STREET
 LENA, IL 61048
 815.369.9155
 1764 BLAKE ST
 DENVER, CO 80202
 303.974.5875
 WWW.LINGLEDESIGN.COM

© ALL DRAWINGS AND WRITTEN MATERIAL CONTAINED HEREIN ARE THE PROPERTY OF THE LINGLE DESIGN GROUP, INC. THEY MAY NOT BE REVISED, COPIED, REPRODUCED, OR DISCLOSED IN ANY MANNER WITHOUT WRITTEN AUTHORIZATION FROM THE ARCHITECT.



PROJECT #
TBD
 DRAWN BY: BA CHECKED BY: MP

SCHEMATIC ELEVATIONS - 09/27/2024

△	
△	
△	
△	
△	
△	
△	

SHERWIN WILLIAMS

STORE #
XXXX
 ADDRESS:
12840 FM1560, HELOTES,
TX 78023

SHEET TITLE:
3D VIEWS & TRASH
ENCLOSURE
DETAILS

SHEET NUMBER:

A2