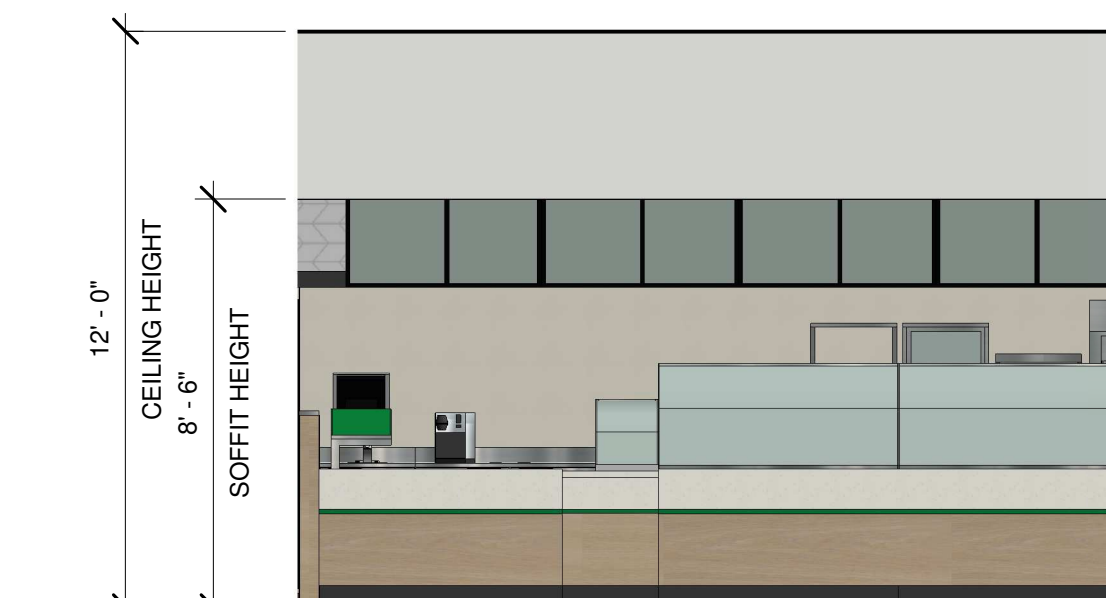
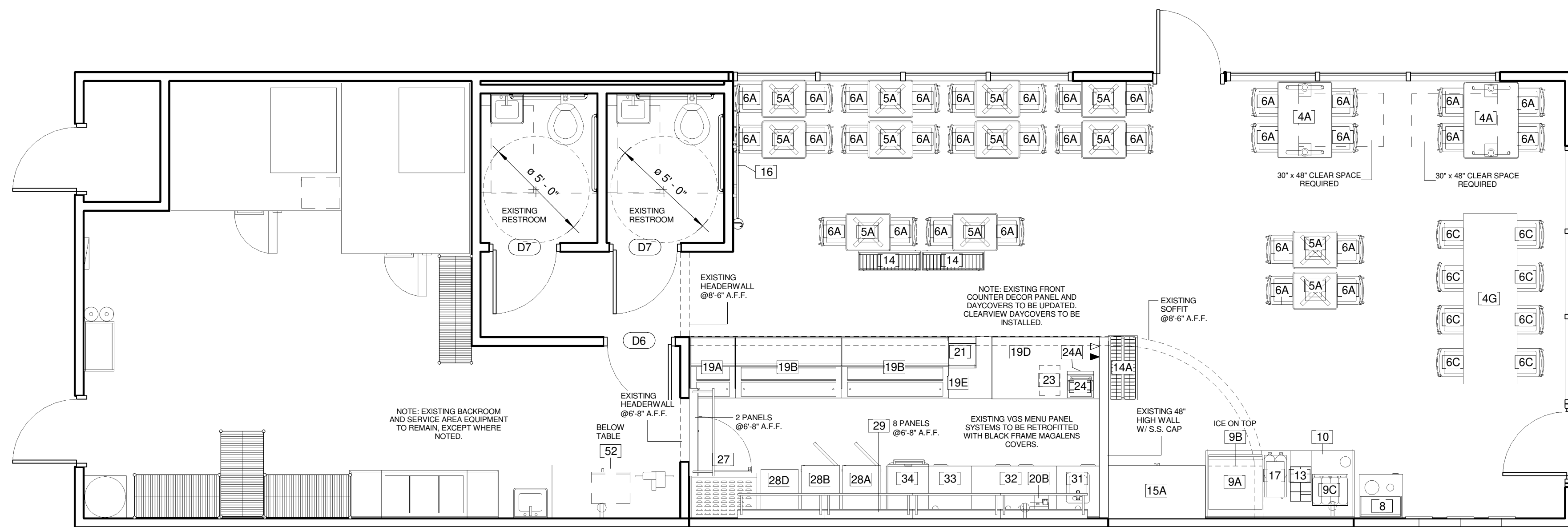


4. Door Schedule					
#	Door Size	Manufacturer	Ordered From	Count	Description
D6	36" x 80"	LOCAL	G.C.	1	SOLID CORE HARDWOOD DOOR (SLAB OR PANEL CONSTRUCTION) METAL FRAME WITH CLEAR ANODIZED ALUMINUM LEVER HANDLE. PAINT DOOR AND FRAME WITH SHERWIN WILLIAMS GOSSAMER VEIL (SW#9165) SEMI-GLOSS FINISH.
D7	36" x 80"	LOCAL	G.C.	2	SOLID CORE HARDWOOD DOOR (SLAB OR PANEL CONSTRUCTION). METAL FRAME WITH CLEAR ANODIZED ALUMINUM LEVER HANDLE. PAINT DOOR AND FRAME WITH BENJAMIN MOORE "YELLOW GREEN" #2033-10, 733-4X ADVANCE. SEMI-GLOSS FINISH.

3. Furniture Schedule						
#	Model	Manufacturer	Ordered From	Equipment Status	Count	Description
3	WALL ARTS	SUNGL0	DAI	New	3	STYRENE FACED POLYSTYRENE FOAMBOARD WALL ART WITH BLACK ALUMINUM FRAME. MOUNTED DIRECTLY TO WALL.
4A	30" X 42" X 30" TABLE	PLYMOLD	DAI	New	2	30" WIDTH X 42" LENGTH X 30" HEIGHT WITH 2 STAMPED STEEL OFFSET ADA BASES. BEIGEWOOD(7850-60) LAMINATE FINISH WITH PVC EDGE, "NORTH SEA" FINISH COLOR.
4G	96" X 30" X 42" COMMUNAL TABLE	PLYMOLD	DAI	New	1	96" X 30" TABLE ON 4 LEGS 42" HIGH. BEIGEWOOD LAMINATE #7850-60 TOP, SILVER DUR-A-EDGE, AND SILVER LEGS.
5A	24" X 20" X 30" TABLE	PLYMOLD	DAI	New	12	30" HIGH WITH FREE STANDING. "X" SERIES PEDESTAL. 22" X 22" STAMPED STEEL FOOT. BEIGEWOOD(7850-60) LAMINATE FINISH WITH PVC EDGE, "NORTH SEA" FINISH COLOR.
6A	CHAIR	PLYMOLD	DAI	New	32	18" HIGH CHAIR WITH UPHOLSTERED SEAT PAD. PAD COLOR IS MOMENTUM BROWN AG5492C10. BACK COLOR IS WHITE C031-WH120.5, SEMI-GLOSS TEXTURE. FRAME COLOR IS SILVER PT96E-6401-C45.
6C	BAR HEIGHT CHAIR	PLYMOLD	DAI	New	8	30" HIGH CHAIR WITH UPHOLSTERED SEAT PAD. PAD COLOR IS CHOCOLATE BY REID WITLIN LTD. BACK COLOR IS LINEN D427-60 BY WILSONART WITH SILVER FRAME
8	TRASH/RECYCLE RECEPTACLE	PLYMOLD	DAI	New	1	DOUBLE HOLE TRASH/RECYCLE RECEPTACLE. 25" X 25" BEIGEWOOD LAMINATE CABINET FINISH. FROSTY WHITE LAMINATE TOP AND OVERSHELF.
9A	SODA FOUNTAIN	CORNELIUS	DAI	Existing	1	8-HEAD COKE SODA FOUNTAIN. DEDICATED 115V, 20AMP DUPLEX OUTLET (NEMA 5-20R) AND 3 INCH MINIMUM FLOOR DRAIN REQUIRED WITHIN 3 FEET. (EQUIPMENT INSTALLED BY COKE).
9B	ICE MAKER	MANITOWOC	DAI	Existing	1	Q-450 CUBER. 115/60/1. 20 AMP FUSE MIN. 220-240/50/1 ALSO AVAILABLE. INSTALLED BY G.C./COKE.
9C	MINI-QUAD BUBBLER	CRATHCO	DAI/G.C.	New	1	SIMPLICITY BUBBLER "MINI-QUAD" WITH 4 9 LITER BOWLS. AGITATOR AND SPRAY MODEL OFFERED. 115V/60Hz/8.5A. 230V MODEL ALSO AVAILABLE. INSTALLED BY G.C.
10	84" BEVERAGE DESTINATION RETROFIT KIT	DUKE	DAI	New	1	BEIGEWOOD LAMINATE BEVERAGE DESTINATION CENTER RETROFIT KIT. RH BEVERAGE PLACEMENT. STAINLESS STEEL TOP. INSTALLED BY G.C.
13	BEVERAGE CADDY	NEMCO	DAI	New	1	LID/STRAW CADDY. PLACED ON TOP OF BEVERAGE COUNTER.
14	QUEUE LINE CHIP DISPLAY	BISH DISPLAY	FRITOLAY	New	2	QUEUE LINE CHIP DISPLAY ON CASTERS. 3 WIRE SHELVES.
14A	TWIST CHIP RACK- MEDIUM	UNITED DISPLAYCRAFT	DAI/FRITOLAY	New	1	ADJUSTABLE MULTI-SHELF CHIP DISPLAY ON CASTERS. 3 SHELF RECOMMENDED BASED ON LAYOUT.
15A	DISPLAY REFRIGERATOR	TRUE	DAI	Existing	1	2 DOOR FLOOR MODEL. DEDICATED 115V, 15 AMP DUPLEX OUTLET (NEMA 5-15R) WITHIN 6 FEET.
16	60" ILLUMINATED CHOICE MARK SIGN	TPC	DAI	New	1	60" X 77" X 1" THICK HALO LIT "S" LOGO. SINTRA SIGN PIN MOUNTED OFF WALL. INSTALLED BY G.C.
17	TEA / COFFEE BREWER	BUNN-O-MATIC CORP.	DAI	Existing	1	DEDICATED 120V, 15 AMP DUPLEX OUTLET (NEMA 5-15P) WITHIN 3 FEET. PLUMBING: 20-90 PSI. MODEL SUPPLIED WITH 1/4" MALE FLARE FITTING. MIN. 1 GPM WATER FLOW.
19A	25" HOT SECTION DAYCOVER RETROFIT KIT- LH	DUKE	DAI/G.C.	New	1	25" HOT SECTION CLEARVIEW DAYCOVER RETROFIT KIT. INSTALLED BY G.C.
19B	60" COLD PAN DAYCOVER RETROFIT KIT	DUKE	DAI	New	2	60" COLD PAN CLEARVIEW DAYCOVER RETROFIT KIT. INSTALLED BY G.C.
19D	61" CASH SECTION	DUKE	DAI	Existing	1	61" CASH SECTION X 34" ADA REQUIRED WORKING HEIGHT. POS UNIT ON COUNTERTOP SHELF.
19E	24" COUNTER EXTENSION	DUKE	DAI	Existing	1	24" EXTENSION X 34" ADA REQUIRED WORKING HEIGHT. SURFACE TO BE REINFORCED IF SUPPORTING SODA FOUNTAIN.
20B	COFFEE BREWER	KEURIG	DAI	New	1	K150 SINGLE K-CUP BREWING SYSTEM. 120 VAC. 60Hz. SINGLE PHASE. 15A. 1400W. NSF APPROVED.
21	COOKIE DISPLAY CASE	NEMCO	DAI	New	1	4 TIER FULLY ENCLOSED COOKIE DISPLAY CASE. GLASS AND POLYCARBONATE CONSTRUCTION.
23	SAFE	C.S.S.	DAI	Existing	1	QUICK DROP. INSTALLED BY G.C. IN SERVICE AREA
24	P.O.S.	PAR/MICROSHP	DAI	Existing	1	PC BASED POINT OF SALE SYSTEM. REQUIRES DEDICATED POWER SOURCE WITH ISOLATED GROUND TO BREAKER
24A	P.O.S. SHROUD	GFX	DAI	New	1	SMALL FORMAT PAINTED METAL SHROUD. FOR USE ON POS SHELF
27	NuVu OVEN RH	NuVu	DAI	Existing	1	NuVu. DEDICATED CIRCUIT REQUIRED. DIRECT WIRED. INSTALLED BY G.C. *1/4" WATERLINE IS REQUIRED
28A	COMBINATION BREAD CABINET(LH)	NU-VU	DAI	Existing	1	INTEGRATED OPEN AIR COOLING RACK ABOVE WITH ENCLOSED CABINET BELOW. INSTALLED BY G.C.
28B	COMBINATION BREAD CABINET (LH)	NU-VU	DAI	Existing	1	FULLY ENCLOSED S.S CABINET WITH GLASS DOORS. INSTALLED BY G.C.
28D	OPEN AIR COOLING RACK	NU-VU	DAI	Existing	1	FULL RACK - 63 1/4" HIGH, 21 7/16" WIDE, 27 1/2" DEEP. INSTALLED BY G.C. NSF APPROVED.
29	2 PANEL FRONT-LIT MENU BOARD	VGS/TRANSLITE SONOMA	DAI	Existing	5	MENUBOARD: 2' X 4' WITH 4' LIGHT FIXTURE MOUNTED TO TOP OF MENUBOARD. SINGLE OUTLET REQUIRED. INSTALLED BY G.C.
31	24" COUNTER SINK RETROFIT KIT	DUKE	DAI	New	1	STAINLESS STEEL RETROFIT KIT FOR BACK COUNTER WITH HAND SINK. INSTALLED BY G.C.
32	48" BACK COUNTER RETROFIT KIT	DUKE	DAI	New	1	STAINLESS STEEL RETROFIT KIT FOR BACK COUNTER. INSTALLED BY G.C.
33	48" REF. BACK COUNTER RETROFIT KIT	DUKE	DAI	New	1	STAINLESS STEEL RETROFIT KIT FOR REFRIGERATED BACK COUNTER. INSTALLED BY G.C.
34	RAPID COOK OVEN	MERRYCHEF	DAI	Existing	1	MERRYCHEF. MICROWAVE/CONVECTION OVEN. REFER TO EQUIPMENT BACK-UP SHEET #2 FOR FURTHER SPECIFICATIONS.
52	MICROWAVE	MENUMASTER/SHARP	DAI	Relocating	1	5-20R OUTLET REQUIRED. 1200 WATT. 120V/60Hz/1PH 20 AMP CIRCUIT. DEDICATED CIRCUIT REQUIRED



SYMBOL LEGEND	
	- 120V DUPLEX OUTLET
	- 220V SINGLE OUTLET
	- ELECTRIC PANEL
	- PHONE JACK
	- DATA JACK
	- CEILING MOUNTED
	- FLOOR MOUNTED
	- JUNCTION BOX
	- THERMOSTAT
	- DIGITAL MEDIA PLAYER

FRESH START LOCATION

- ELECTRICAL OUTLET HEIGHTS MEASURED TO BOTTOM OF BOX.
- ONE ELECTRICAL JUNCTION BOX TO BE LOCATED IN CEILING ABOVE EACH WINDOW.
- CUNO MODEL SW200-PLUS WATER FILTRATION SYSTEM IS REQUIRED IN ALL NEW STORES THAT DISPENSE BEVERAGES. THE RECOMMENDED PLACEMENT FOR INSTALLATION IS MOUNTED TO SODA SYRUP RACK BY COCA-COLA. SECONDARY PLACEMENT OPTION IS MOUNTED ON THE BACKROOM WALL. THIRD INSTALLATION OPTION IS MOUNTING INSIDE THE FRONT BEVERAGE COUNTER WHEN SPACE LIMITATIONS OCCUR. REQUIRED: 1/2" INCOMING WATER LINE FEED WITH 1/2" BALL VALVE SHUTOFF AND 1/2" PPT CONNECTION. MINIMUM 110 VOLT, 20 AMP ELECTRICAL SERVICE TO SUPPORT THE CARBONATOR AND WATER BOOSTER (MUST BE DEDICATED CIRCUIT).
- EXIT LIGHTS INSTALLED BY G.C. PER LOCAL CODE.
- EMERGENCY LIGHTS INSTALLED BY G.C. PER LOCAL CODE.
- EXTINGUISHERS, SMOKE AND FIRE DETECTION SYSTEMS INSTALLED BY G.C. PER LOCAL CODE.
- LABOR & MATERIAL SUPPLIED BY G.C. UNLESS OTHERWISE NOTED.
- ALL DIMENSIONS TO BE VERIFIED BY G.C. ON SITE.
- REFRIGERATOR AND FREEZER MUST BE ADEQUATELY VENTILATED. REFER TO MANUFACTURER FOR DETAILS.

THIS DRAWING IS FURNISHED BY FWH ON BEHALF OF SUBWAY IP, LLC. ("SIP") D/B/A SUBWAY. RECIPIENT MUST DETERMINE IF THIS DRAWING MUST BE SUBMITTED TO A LICENSED ARCHITECT OR SIMILAR PROFESSIONAL UNDER FEDERAL, STATE OR LOCAL LAW. ANY CHANGES MUST BE APPROVED BY SIP.

DO NOT SCALE DRAWING. WRITTEN DIMENSIONS TAKE PRECEDENCE OVER SCALED DIMENSIONS. AND SHALL BE VERIFIED IN THE FIELD BY THE GENERAL CONTRACTOR AND/OR FRANCHISEE/OWNER. ANY DISCREPANCY IN DIMENSIONS SHALL BE BROUGHT TO THE IMMEDIATE ATTENTION OF YOUR AREA DEVELOPMENT AGENT OR DESIGNATED FIELD REPRESENTATIVE.

THE GENERAL CONTRACTOR AND EACH SUB-CONTRACTOR SHALL MAKE HIS OWN INSPECTIONS AND MEASUREMENTS. FWH AND SIP SHALL NOT BE HELD RESPONSIBLE FOR THE ACCURACY OF DIMENSIONS AND FOR ERRORS AND OMISSIONS IN THE DRAWINGS IF WRITTEN CONFIRMATION HAD NOT BEEN RECEIVED BY THE FWH STORE DESIGN DEPARTMENT.

THIS DRAWING AND THE INFORMATIONAL CONTENT HERE OF IS THE CONFIDENTIAL PROPERTY OF SIP AND IS PROVIDED SOLELY FOR THE USE OF AUTHORIZED FRANCHISEES, THEIR AGENTS AND CONTRACTORS. RECIPIENT AGREES NOT TO REPRODUCE, COPY, USE OR TRANSMIT THIS DRAWING AND/OR ITS INFORMATIONAL CONTENT, IN WHOLE OR IN PART, OR TO ALLOW SUCH ACTION BY OTHERS, FOR ANY PURPOSE, EXCEPT WITH THE WRITTEN PERMISSION OF SIP OR FWH ACTING ON BEHALF OF SIP. RECIPIENT FURTHER AGREES TO SURRENDER THIS DRAWING AND ANY PERMITTED COPIES HEREOF UPON DEMAND.

DESIGNED BY:
LOUIS CHIEPPO

REVIEWED BY:

REVISIONS			
NO.	DATE	DESCRIPTION	DRAWN BY

RESTAURANT #:
18283

DATE:
11/23/2019

ADDRESS:
**13041 BANDERA ROAD
HELOTES, TX
78023**

DEVELOPMENT AGENT:
RICK RILEY

FRANCHISEE:
JR DANIEL

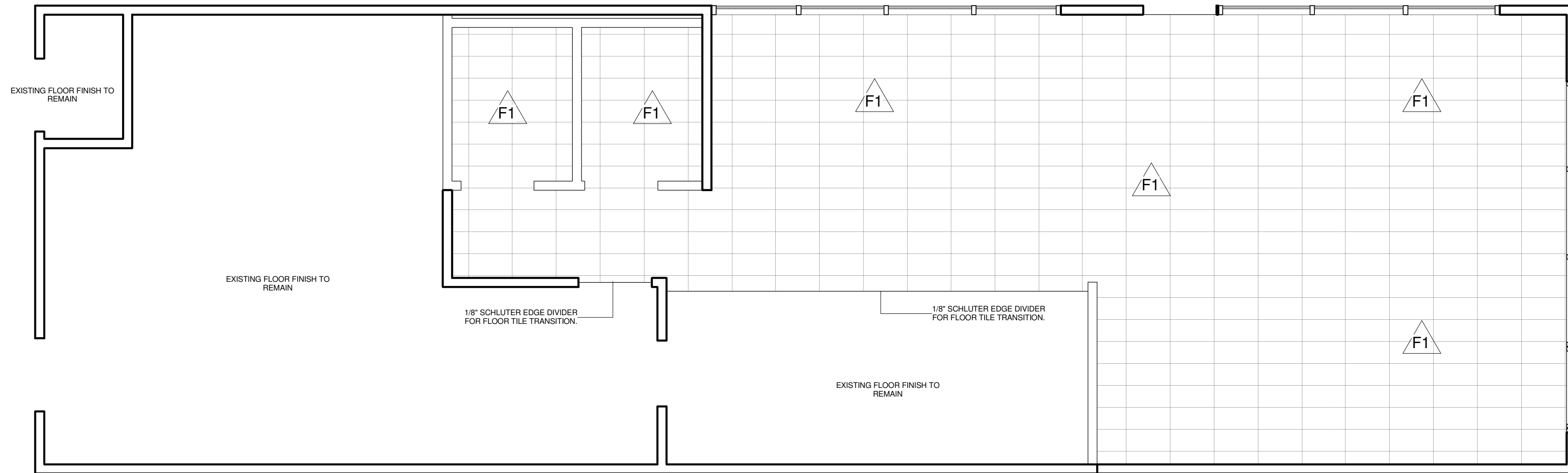
**WORLD HEADQUARTERS
325 SUB WAY
MILFORD, CT 06461
(203) 877-4281 (800)888-4848**

SHEET #:
1

SCALE:
As indicated

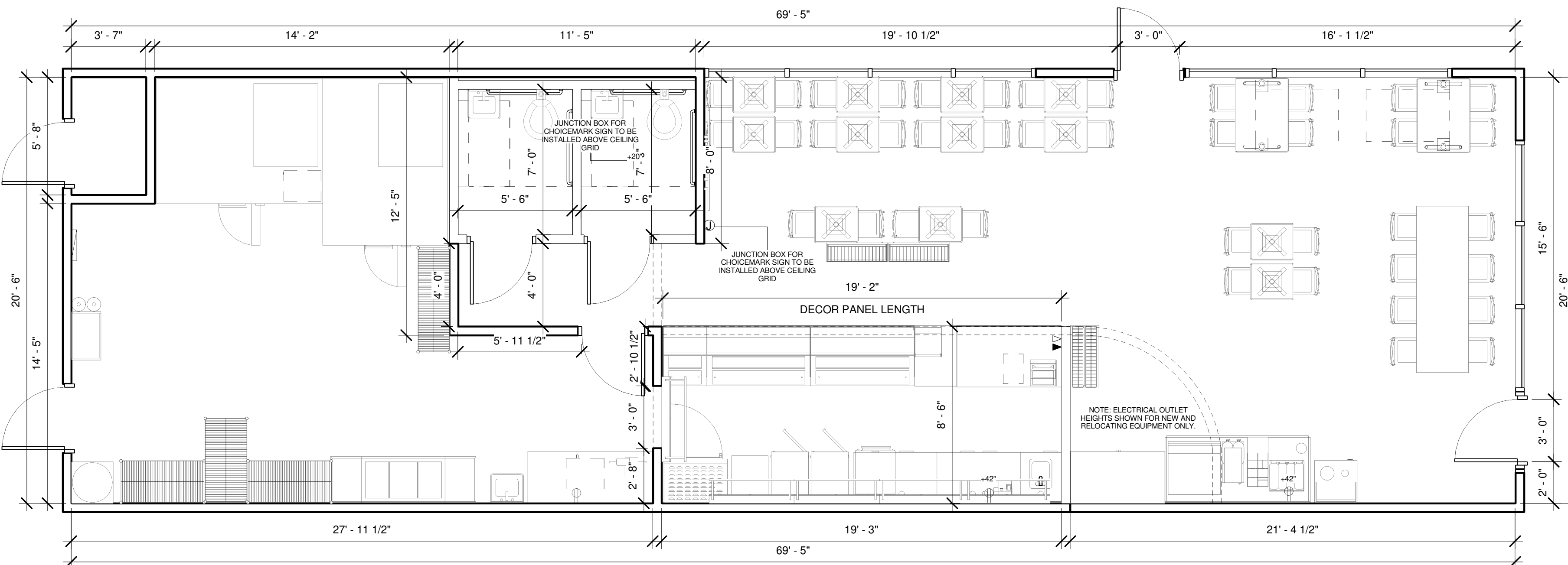
© 2018 SUBWAY IP, LLC.

RESTAURANT MUST BE CONSTRUCTED AS DESIGNED IN THESE FLOOR PLANS SUBJECT TO FEDERAL, STATE AND LOCAL LAWS. RECIPIENT IS RESPONSIBLE FOR ENSURING COMPLIANCE WITH ALL LAWS. IF MODIFICATIONS ARE NECESSARY, PLEASE CONTACT THE FWH STORE DESIGN DEPARTMENT FOR WRITTEN APPROVAL OF THE REQUIRED CHANGES.



2 FLOOR FINISH PLAN
1/4" = 1'-0"

6. Floor Schedule					
Symbol	Floor	Manufacturer	Ordered From	Area	Description
F1	CUSTOMER AREA / RESTROOMS	CROSSVILLE / PORCELANOSA	MANUFACTURER	789.18 sq ft	OPTION 1: CROSSVILLE "SILVER SANDS" 12" X 24" PORCELAIN FLOOR TILES. COLOR: AD-126-2. 3/16" THICK GROUT LINES. LATICRETE PERMACOLOR SELECT-CEMENTITIOUS GROUT. COLOR: 35 MOCHA. OPTION 2: PORCELANOSA, "LINKFLOOR PICCADILLY" LVT. 12" X 24" X 1/4" THICK. HEAVY DUTY WATERPROOF OVERLAY ON SELF ADHESIVE MEMBRANE. INSTALLED BY G.C.



1 DIMENSION & ELECTRICAL PLAN
1/4" = 1'-0"

SYMBOL LEGEND	
	- 120V DUPLEX OUTLET
	- 220V SINGLE OUTLET
	- ELECTRIC PANEL
	- PHONE JACK
	- DATA JACK
	- CEILING MOUNTED
	- FLOOR MOUNTED
	- JUNCTION BOX
	- THERMOSTAT
	- DIGITAL MEDIA PLAYER

FRESH START LOCATION

- ELECTRICAL OUTLET HEIGHTS MEASURED TO BOTTOM OF BOX.
- ONE ELECTRICAL JUNCTION BOX TO BE LOCATED IN CEILING ABOVE EACH WINDOW.
- CUNO MODEL SW200-PLUS WATER FILTRATION SYSTEM IS REQUIRED IN ALL NEW STORES THAT DISPENSE BEVERAGES. THE RECOMMENDED PLACEMENT FOR INSTALLATION IS MOUNTED TO SODA SYRUP RACK BY COCA-COLA. SECONDARY PLACEMENT OPTION IS MOUNTED ON THE BACKROOM WALL. THIRD INSTALLATION OPTION IS MOUNTING INSIDE THE FRONT BEVERAGE COUNTER WHEN SPACE LIMITATIONS OCCUR. REQUIRED: 1/2" INCHING WATER LINE FEED WITH 1/2" BALL VALVE SHUTOFF AND 1/2" PPT CONNECTION. MINIMUM 110 VOLT, 20 AMP ELECTRICAL SERVICE TO SUPPORT THE CARBONATOR AND WATER BOOSTER (MUST BE DEDICATED CIRCUIT).
- EXIT LIGHTS INSTALLED BY G.C. PER LOCAL CODE.
- EMERGENCY LIGHTS INSTALLED BY G.C. PER LOCAL CODE.
- EXTINGUISHERS, SMOKE AND FIRE DETECTION SYSTEMS INSTALLED BY G.C. PER LOCAL CODE.
- LABOR & MATERIAL SUPPLIED BY G.C. UNLESS OTHERWISE NOTED.
- ALL DIMENSIONS TO BE VERIFIED BY G.C. ON SITE.
- REFRIGERATOR AND FREEZER MUST BE ADEQUATELY VENTILATED. REFER TO MANUFACTURER FOR DETAILS.

THIS DRAWING IS FURNISHED BY FWH ON BEHALF OF SURWAY IP, LLC. ("SIP") D/B/A SUBWAY. RECIPIENT MUST DETERMINE IF THIS DRAWING MUST BE SUBMITTED TO A LICENSED ARCHITECT OR SIMILAR PROFESSIONAL UNDER FEDERAL, STATE OR LOCAL LAW. ANY CHANGES MUST BE APPROVED BY SIP.
DO NOT SCALE DRAWING. WRITTEN DIMENSIONS TAKE PRECEDENCE OVER SCALED DIMENSIONS. AND SHALL BE VERIFIED IN THE FIELD BY THE GENERAL CONTRACTOR AND/OR FRANCHISEE/OWNER. ANY DISCREPANCY IN DIMENSIONS SHALL BE BROUGHT TO THE IMMEDIATE ATTENTION OF YOUR AREA DEVELOPMENT AGENT OR DESIGNATED FIELD REPRESENTATIVE.
THE GENERAL CONTRACTOR AND EACH SUB-CONTRACTOR SHALL MAKE HIS OWN INSPECTIONS AND MEASUREMENTS. FWH AND SIP SHALL NOT BE HELD RESPONSIBLE FOR THE ACCURACY OF DIMENSIONS AND FOR ERRORS AND OMISSIONS IN THE DRAWINGS IF WRITTEN CONFIRMATION HAD NOT BEEN RECEIVED BY THE FWH STORE DESIGN DEPARTMENT.
THIS DRAWING AND THE INFORMATIONAL CONTENT HERE OF IS THE CONFIDENTIAL PROPERTY OF SIP AND IS PROVIDED SOLELY FOR THE USE OF AUTHORIZED FRANCHISEES, THEIR AGENTS AND CONTRACTORS. RECIPIENT AGREES NOT TO REPRODUCE, COPY, USE OR TRANSMIT THIS DRAWING AND/OR ITS INFORMATIONAL CONTENT, IN WHOLE OR IN PART, OR TO ALLOW SUCH ACTION BY OTHERS, FOR ANY PURPOSE, EXCEPT WITH THE WRITTEN PERMISSION OF SIP OR FWH ACTING ON BEHALF OF SIP. RECIPIENT FURTHER AGREES TO SURRENDER THIS DRAWING AND ANY PERMITTED COPIES HEREOF UPON DEMAND.

DESIGNED BY:
LOUIS CHIEPPO

REVIEWED BY:

RESTAURANT MUST BE CONSTRUCTED AS DESIGNED IN THESE FLOOR PLANS SUBJECT TO FEDERAL, STATE AND LOCAL LAWS. RECIPIENT IS RESPONSIBLE FOR ENSURING COMPLIANCE WITH ALL LAWS. IF MODIFICATIONS ARE NECESSARY, PLEASE CONTACT THE FWH STORE DESIGN DEPARTMENT FOR WRITTEN APPROVAL OF THE REQUIRED CHANGES.

REVISIONS			
NO.	DATE	DESCRIPTION	DRAWN BY

RESTAURANT #: **18283** DATE: **11/23/2019**

ADDRESS: **13041 BANDERA ROAD
HELOTES, TX
78023**

DEVELOPMENT AGENT:
RICK RILEY

FRANCHISEE:
JR DANIEL

**WORLD HEADQUARTERS
325 SUB WAY
MILFORD, CT 06461
(203) 877-4281 (800)888-4848**

SHEET #:
2

SCALE:
As indicated

© 2018 SUBWAY IP, LLC.

7. Wall Covering & Laminate Schedule

NOTE: THE SUBWAY STORE DESIGN DEPARTMENT WILL NOT ACCEPT RESPONSIBILITY FOR ANY INACCURACIES. THE CALCULATIONS PROVIDED BELOW MUST BE VERIFIED BY THE G.C. AND FRANCHISE OWNER BEFORE ANY ORDER FOR THESE MATERIALS IS ACCEPTED AND PLACED. ALL WALL FINISH CALCULATIONS INCLUDE A 15% BUFFER.

Symbol	Model	Manufacturer	Ordered From	Area	Yards	Description
BWL	BEIGEWOOD LAMINATE	WILSONART	DAI/GC	66.51 ft ²	7	BEIGEWOOD LAMINATE (7850-60) MATTE FINISH. LOW WALLS TOPPED WITH STAINLESS STEEL TOP ACQUIRED LOCALLY. ORDERED IN 48" W x 144" L SHEETS. INSTALLED BY G.C.
BG/WC	BRAND GREEN	SUNGL0 FABRICS	DAI/GC	124.30 ft ²	13	52/54" WIDE, BRAND GREEN WALLCOVERING. COLOR: BRAND GREEN. TEDLAR COATED. INSTALLED VERTICALLY BY G.C.
CWC	CHEVRON WALLCOVERING	SUNGL0 FABRICS	DAI/GC	681.83 ft ²	68	52/54" WIDE VINYL WALLCOVERING. GREY BACKGROUND-WHITE LINES. TEDLAR COATED. INSTALLED VERTICALLY BY G.C.
FGWC	LIGHT GREEN FOCAL WALLCOVERING	SUNGL0 FABRICS	DAI/GC	96.00 ft ²	10	52/54" FOCAL WALL VINYL WALLCOVERING. #92456, E-349 HEAVY CORD. COLOR: LT.GREEN. TEDLAR COATED. INSTALLED VERTICALLY BY G.C.
SWC	SHIMMER WALLCOVERING	SUNGL0 FABRICS	DAI/GC	282.60 ft ²	29	52/54" WIDE VINYL WALLCOVERING. COLOR: SILVER CREAM. TEDLAR COATING. INSTALLED VERTICALLY BY G.C.

8. FRP Schedule

NOTE: THE SUBWAY STORE DESIGN DEPARTMENT WILL NOT ACCEPT RESPONSIBILITY FOR ANY INACCURACIES. THE CALCULATIONS PROVIDED BELOW MUST BE VERIFIED BY THE G.C. AND FRANCHISE OWNER BEFORE ANY ORDER FOR THESE MATERIALS IS ACCEPTED AND PLACED. ALL WALL FINISH CALCULATIONS INCLUDE A 15% BUFFER.

Symbol	Model	Manufacturer	Ordered From	Area	# Of Sheets	Description
FRP/2	SMOOTH GRAY FRP	CRANE COMPOSITES	DAI/GC	247.22 ft ²	8	4' X 10' X .075" GLASBORD SMOOTH LIGHT GRAY FIBERGLASS REINFORCED PANELS- WATER RESISTANT COVERING. LIGHT GRAY MOLDINGS AND TRIM BY MFG. INSTALLED BY G.C.

9. Paint & Tile Schedule

NOTE: THE SUBWAY STORE DESIGN DEPARTMENT WILL NOT ACCEPT RESPONSIBILITY FOR ANY INACCURACIES. THE CALCULATIONS PROVIDED BELOW MUST BE VERIFIED BY THE G.C. AND FRANCHISE OWNER BEFORE ANY ORDER FOR THESE MATERIALS IS ACCEPTED AND PLACED. ALL WALL FINISH CALCULATIONS INCLUDE A 15% BUFFER.

Symbol	Model	Manufacturer	Ordered From	Area	Description
S/T	SHADOW WALL TILE	CROSSVILLE	DAI/GC	124.64 ft ²	CROSSVILLE, SHADOW 12" X 24" PORCELAIN TILES WITH 3/16" GROUT LINES. PERMACOLOR SELECT- CEMENTITIOUS GROUT. GROUT COLOR: 90 LIGHT PEWTER. INSTALLED HORIZONTALLY IN A STACKED BOND PATTERN BY G.C.
W/P	WHITE PAINT	SHERWIN WILLIAMS	DAI/GC	127.94 ft ²	SW7005 "PURE WHITE" PAINT. EGG SHELL FINISH.

10. Wall Detail Schedule

NOTE: THE SUBWAY STORE DESIGN DEPARTMENT WILL NOT ACCEPT RESPONSIBILITY FOR ANY INACCURACIES. THE CALCULATIONS PROVIDED BELOW MUST BE VERIFIED BY THE G.C. AND FRANCHISE OWNER BEFORE ANY ORDER FOR THESE MATERIALS IS ACCEPTED AND PLACED.

Model	Manufacturer	Ordered From	Length	8 ft. Lengths	12 ft. Lengths	Description
BLACK FRAMING	GFX	DAI/G.C.	53" - 4"	7	6	BLACK SINTRA DATUM MOLDING. 4" X 1/4" THICK.
CORNER GUARD	SUNGL0 FABRICS	DAI/G.C.	12" - 0"	2	1	1/2" X 1/2" ALUMINUM GUARDS. FOR WALLCOVERING CORNER TRANSITIONS. BRUSHED ALUMINUM FINISH BY MFG. INSTALLED BY G.C.
WALL BASE	PARKLAND PLASTICS	DAI/G.C.	76" - 1"	12	9	6" X 8" CUSTOMER AREA BLACK DUROBASE WALL PROTECTION SYSTEM. RESIN WITH SMOOTH FINISH. INSTALLED BY G.C.

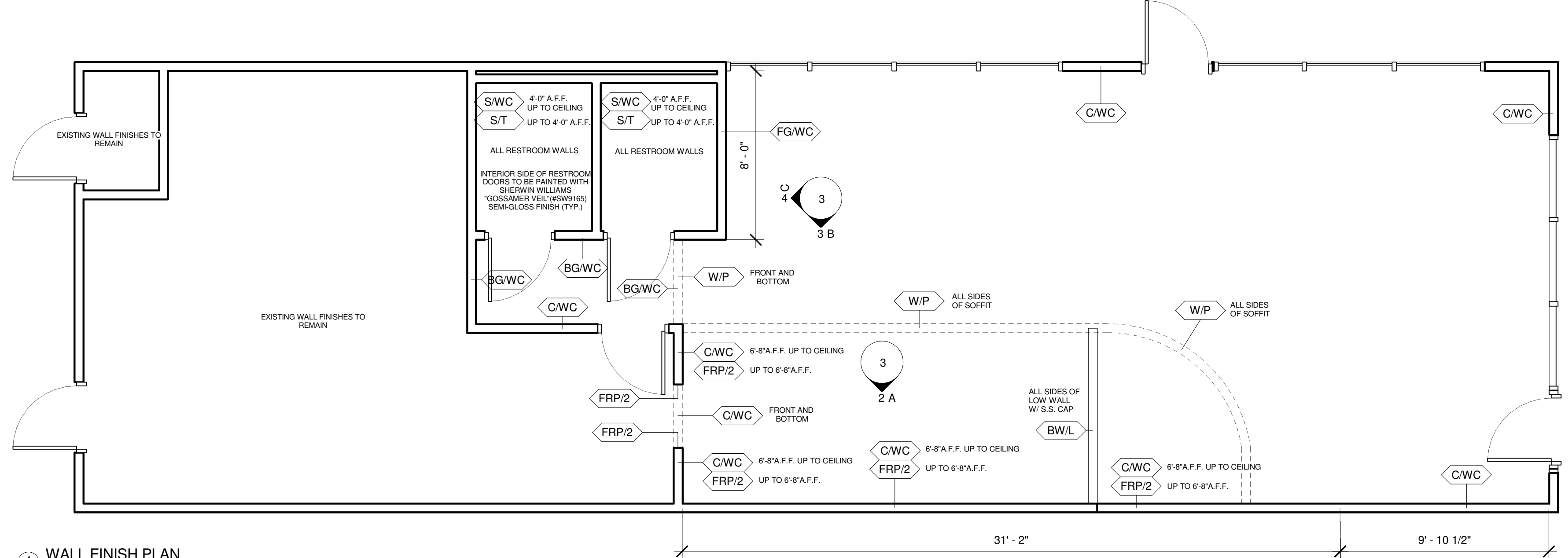


6 3D View 2



7 3D View 3

FRP CALCULATION WORKSHEET	WHITE FRP (FRP/1)	SMOOTH GRAY (FRP/2)
PVC DIVISION MOLDING (NUMBER OF FRP PANELS MINUS 1)	X	7
PVC INSIDE CORNER (INSIDE CORNERS WHERE FRP MEET)	X	1
PVC OUTSIDE (OUTSIDE CORNERS WHERE FRP MEET)	X	2
PVC CAP MOLDING (EDGES WHERE FRP BEGINS & ENDS & DOORWAYS)	X	3



1 WALL FINISH PLAN
1/4" = 1'-0"



5 3D View 1

SYMBOL LEGEND	
⊕	120V DUPLEX OUTLET
⊕	220V SINGLE OUTLET
⊞	ELECTRIC PANEL
⊞	PHONE JACK
⊞	DATA JACK
⊞	CEILING MOUNTED
F.M.	FLOOR MOUNTED
⊞	JUNCTION BOX
⊞	THERMOSTAT
⊞	DIGITAL MEDIA PLAYER

• ELECTRICAL OUTLET HEIGHTS MEASURED TO BOTTOM OF BOX.
 • ONE ELECTRICAL JUNCTION BOX TO BE LOCATED IN CEILING ABOVE EACH WINDOW.
 • CUNO MODEL SW200-PLUS WATER FILTRATION SYSTEM IS REQUIRED IN ALL NEW STORES THAT DISPENSE BEVERAGES. THE RECOMMENDED PLACEMENT FOR INSTALLATION IS MOUNTED TO SODA SYRUP RACK BY COCA-COLA. SECONDARY PLACEMENT OPTION IS MOUNTED ON THE BACKROOM WALL. THIRD INSTALLATION OPTION IS MOUNTING INSIDE THE FRONT BEVERAGE COUNTER WHEN SPACE LIMITATIONS OCCUR. REQUIRED: 1/2" INCOMING WATER LINE FEED WITH 1/2" BALL VALVE SHUTOFF AND 1/2" PFT CONNECTION. MINIMUM 110 VOLT, 20 AMP ELECTRICAL SERVICE TO SUPPORT THE CARBONATOR AND WATER BOOSTER (MUST BE DEDICATED CIRCUIT).
 • EXT LIGHTS INSTALLED BY G.C. PER LOCAL CODE.
 • EMERGENCY LIGHTS INSTALLED BY G.C. PER LOCAL CODE.
 • EXTINGUISHERS, SMOKE AND FIRE DETECTION SYSTEMS INSTALLED BY G.C. PER LOCAL CODE.
 • LABOR & MATERIAL SUPPLIED BY G.C. UNLESS OTHERWISE NOTED.
 • REFRIGERATOR AND FREEZER MUST BE ADEQUATELY VENTILATED. REFER TO MANUFACTURER FOR DETAILS.

FRESH START LOCATION

THIS DRAWING IS FURNISHED BY FWH ON BEHALF OF SUBWAY IP, LLC. ("SIP") D/B/A SUBWAY. RECIPIENT MUST DETERMINE IF THIS DRAWING MUST BE SUBMITTED TO A LICENSED ARCHITECT OR SIMILAR PROFESSIONAL UNDER FEDERAL, STATE OR LOCAL LAW. ANY CHANGES MUST BE APPROVED BY SIP.
 DO NOT SCALE DRAWING. WRITTEN DIMENSIONS TAKE PRECEDENCE OVER SCALED DIMENSIONS. AND SHALL BE VERIFIED IN THE FIELD BY THE GENERAL CONTRACTOR AND/OR FRANCHISEE/OWNER. ANY DISCREPANCY IN DIMENSIONS SHALL BE BROUGHT TO THE IMMEDIATE ATTENTION OF YOUR AREA DEVELOPMENT AGENT OR DESIGNATED FIELD REPRESENTATIVE.
 THE GENERAL CONTRACTOR AND EACH SUB-CONTRACTOR SHALL MAKE HIS OWN INSPECTIONS AND MEASUREMENTS. FWH AND SIP SHALL NOT BE HELD RESPONSIBLE FOR THE ACCURACY OF DIMENSIONS AND FOR ERRORS AND OMISSIONS IN THE DRAWINGS IF WRITTEN CONFIRMATION HAD NOT BEEN RECEIVED BY THE FWH STORE DESIGN DEPARTMENT.
 THIS DRAWING AND THE INFORMATIONAL CONTENT HERE OF IS THE CONFIDENTIAL PROPERTY OF SIP AND IS PROVIDED SOLELY FOR THE USE OF AUTHORIZED FRANCHISEES, THEIR AGENTS AND CONTRACTORS. RECIPIENT AGREES NOT TO REPRODUCE, COPY, USE OR TRANSMIT THIS DRAWING AND/OR ITS INFORMATIONAL CONTENT, IN WHOLE OR IN PART, OR TO ALLOW SUCH ACTION BY OTHERS, FOR ANY PURPOSE, EXCEPT WITH THE WRITTEN PERMISSION OF SIP OR FWH ACTING ON BEHALF OF SIP. RECIPIENT FURTHER AGREES TO SURRENDER THIS DRAWING AND ANY PERMITTED COPIES HEREOF UPON DEMAND.

DESIGNED BY:
LOUIS CHIEPPO

REVIEWED BY:

REVISIONS			
NO.	DATE	DESCRIPTION	DRAWN BY

RESTAURANT MUST BE CONSTRUCTED AS DESIGNED IN THESE FLOOR PLANS SUBJECT TO FEDERAL, STATE AND LOCAL LAWS. RECIPIENT IS RESPONSIBLE FOR ENSURING COMPLIANCE WITH ALL LAWS. IF MODIFICATIONS ARE NECESSARY, PLEASE CONTACT THE FWH STORE DESIGN DEPARTMENT FOR WRITTEN APPROVAL OF THE REQUIRED CHANGES.

RESTAURANT #: **18283**
 DATE: **11/23/2019**
 ADDRESS: **13041 BANDERA ROAD
 HELOTES, TX
 78023**

DEVELOPMENT AGENT:
RICK RILEY

FRANCHISEE:
JR DANIEL

WORLD HEADQUARTERS
325 SUB WAY
MILFORD, CT 06461
(203) 877-4281 (800)888-4848

SHEET #:
3

SCALE:
As indicated

© 2018 SUBWAY IP, LLC.